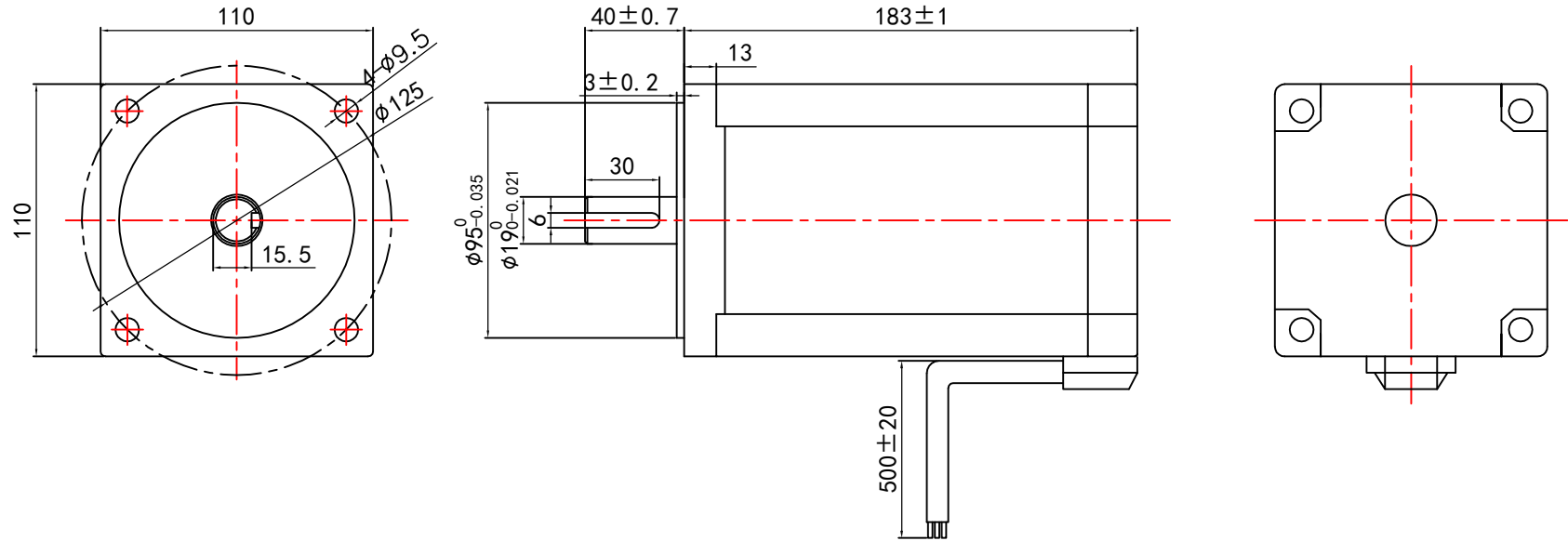


电机尺寸  
DIMENSIONS:  
(UNIT=MM)



说明NOTES:

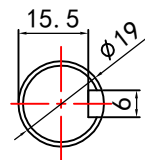
- PLEASE DON'T HOLD MOTOR BY LEAD WIRES.
- PLEASE DON'T PLUG IN/OUT THE MOTOR CONNECTOR WHILE POWER ON.
- PLEASE DON'T DROP, HURL OR DUMP MOTOR AGAINST HARD MATERIAL. MALFUNCTION MAY NOT BE OBSERVED AT EARLY STAGE AFTER SUCH SHOCKS, BUT FOUND LATER. THE MISHANDLING VOIDS OUR WARRANTY.
- GUANGDONG INSHI-TECH WILL NOT BE RESPONSIBLE FOR ANY PATENT DISPUTE OR PROBLEM CAUSED BY ACTUAL APPLICATIONS.

驱动连接方式  
CONNECTION MODE:

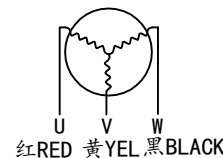
连接方式 CONNECTION MODE	MOTOR CABLES 3" 12AWG			HALL SENSOR CABLES 5" 26AWG				
电机线 MOTOR LINE	粗红 RED	粗黄 YEL	粗黑 BLACK	细黑 BLACK	细蓝 BLUE	细绿 GER	细白 WHITE	细红 RED
驱动器接口 DRIVER INTERFACE	U	V	W	REF-	HU	HV	HW	REF+

电机参数/ELECTRICAL PARAMETER	
额定功率 RATED POWER (W)	1500
额定转速 RATED SPEED (RPM+10%)	1800
电机电压 RATED VOLTAGE (V)	48
电机电流 RESISTANCE (A)	<40
电机力矩 HOLDING TORQUE (N.M)	7.5
空载转速 Idle Speed (RPM+10%)	2300
空载电流 No-Load Current (A)	4
电机极数 Motor Pole Number	8
绝缘等级 Insulation Grade	A
重量 Weight (KG)	≈8.1

轴径配置/SHAFT DESIGN



接线方式/Connection Mode



制图 DESIGNED	检图 CHECKED	校准 APPROVED	日期 DATE	比例 SCALE
JIAJIANG	CHENSHENG		2022/7/16	1:1
110BLF15018-48-U01A		东莞市一能机电技术有限公司 DONGGUAN ICAN TECHNOLOGY CO., LTD		
		第一视角	单位	版本 EDITION
直流无刷电机 BRUSHLESS DC MOTOR			MM	V1.0