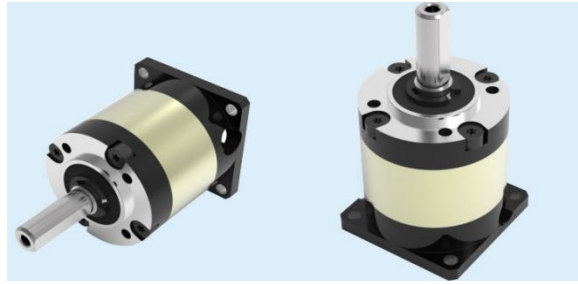
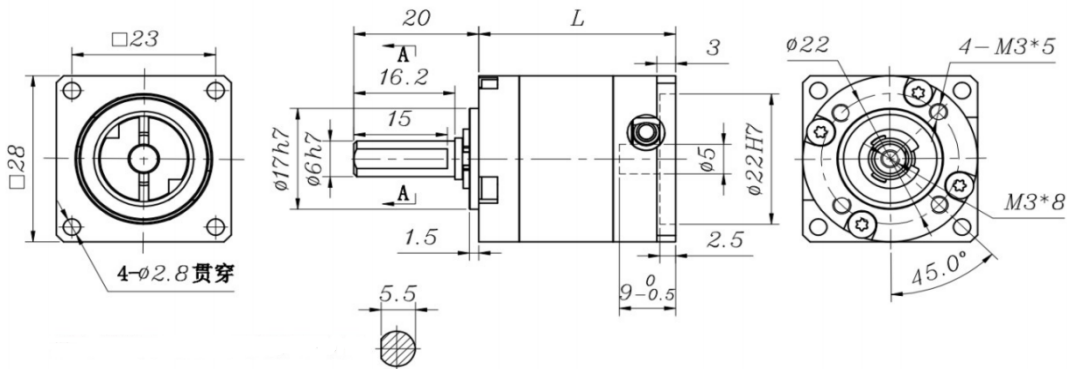


ican Planetary gear

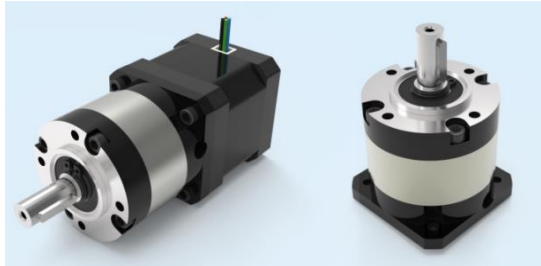
28MM Planetary Reducer PLE28-



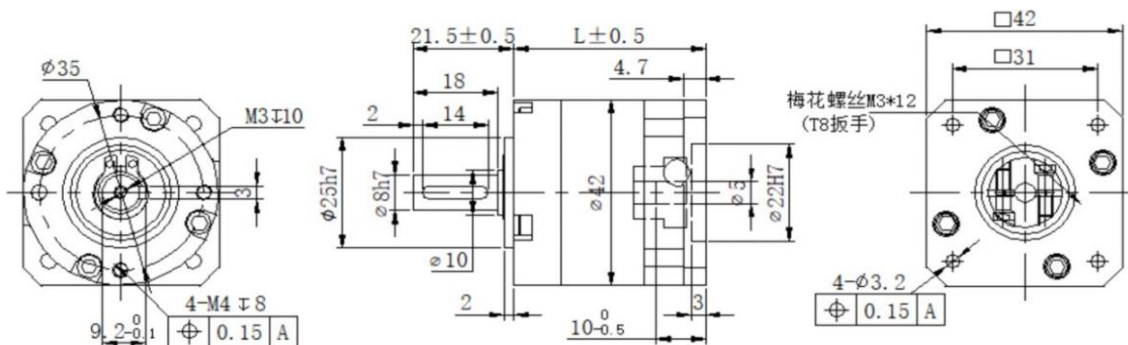
Ratio	Rated torque(Nm)	Efficiency (%)	Backlash (arcmin)	Input speed(rpm/m)	LenthL(mm)
4, 5, 7, 10	≤1.5	94%	≤15	≤3000	31.5
16,20,25,35,40,50,70	≤2.5	90%	≤20	≤3000	40



42MM Planetary Reducer PLE42-



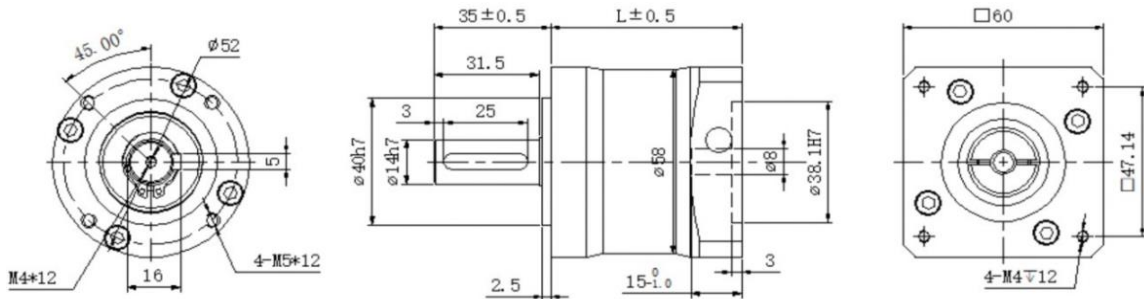
Ratio	Rated torque(Nm)	Efficiency (%)	Backlash (arcmin)	Input speed(rpm/m)	LenthL(mm)
4, 5, 7, 10	≤6	96%	15	3000	40
16,20,25,28,35,40,50,70	≤10	94%	20	3000	51



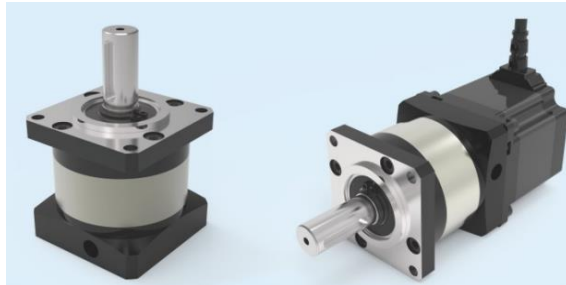
60MM Planetary Reducer PLE60-



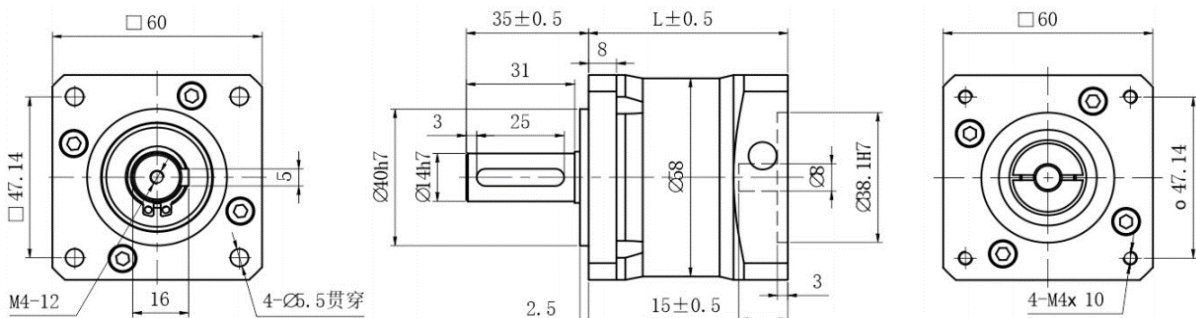
Ratio	Rated torque(Nm)	Efficiency (%)	Backlash (arcmin)	Input speed(rpm/m)	LenthL(mm)
4, 5, 7, 10	≤20	96%	10	3000	57
16,20,25,28,35,40,50,70	≤30	94%	15	3000	73



60MM Planetary Reducer PLF60-



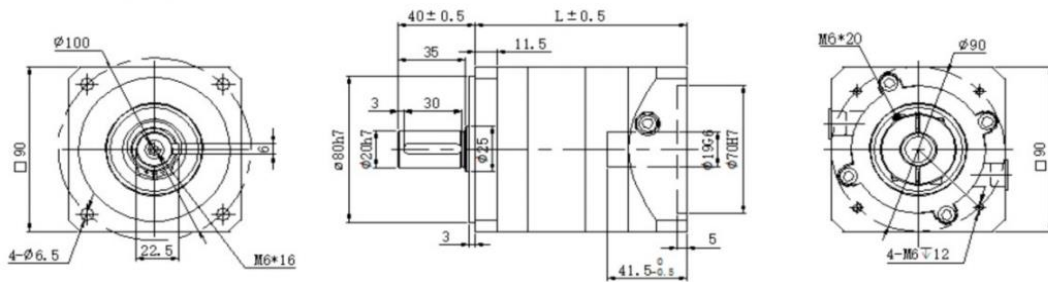
Ratio	Rated torque(Nm)	Efficiency (%)	Backlash (arcmin)	Input speed(rpm/m)	LenthL(mm)
4, 5, 7, 10	≤20	96%	10	3000	57
16,20,25,28,35,40,50,70	≤30	94%	15	3000	73



90MM Planetary Reducer SPLF90-



Ratio	Rated torque(Nm)	Efficiency (%)	Backlash (arcmin)	Input speed(rpm/m)	LenthL(mm)
4, 5, 7, 10	≤60	96%	8	3000	110
16,20,25,28,35,40,50,70	≤90	94%	10	3000	132



Mounting Instruction

1

clean clean

核对马达与减速机型号是否正确，并将安装面擦拭干净。
Double-check the motor and reducer size. Clean the mounting surface.

2

取下马达轴键。

Remove motor key.

3

将螺堵或孔塞取出，转动马达夹套，直到夹套螺丝对准侧螺栓孔。

Remove plug screw, turn the motor lock sleeve until the sleeve screw is aligned to the side bolt hole.

4

检查输入孔尺寸，并将输入孔擦拭干净。如有必要，请装上轴套。

Inspect and clean input hole size, insert shaft sleeve if necessary.

5

直立装入马达，按①~④顺序对角将螺丝锁上。

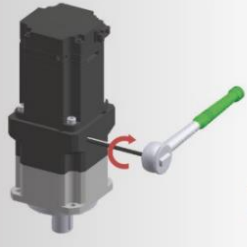
Insert the motor vertically and tighten the mounting screws in the order of ①~④.

6

参照表II扭力值，按①~④顺序，对角用扭力扳手将螺丝锁紧。

Refer to the torque in Table II and use the torque wrench to tighten the mounting screws in the order of ①~④.

7



参照表 I 扭力值，
用扭力扳手将马达夹套螺丝锁紧。

Refer to Table I Torque and tighten the
motor lock sleeve screw with a torque
wrench.

8



锁回螺堵或孔塞。

Tighten back the plug screw.

Note: For other size or customization, please contact us via inquiry@ican-tech.com.